

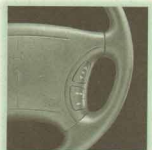
The 1996
SILHOUETTE





A versatile minivan with powerful performance.

SERIES I — Standard features include an all-new 180-hp 3400 V6 engine with sequential port fuel injection, 4-speed electronic-shift automatic transmission, driver air bag, anti-lock braking system, power rack-and-pinion steering, 7-passenger modular seating, air conditioning, power windows, automatic programmable power door locks, 6-way power driver's seat, remote-control keyless entry system, 15-inch aluminum wheels, and an AM/FM stereo with cassette player.



And one that features unexpected luxuries.

SERIES II — Additional standard features include luxurious leather-trimmed seating surfaces, remote-control power sliding side door, and steering wheel touch controls for the audio system.



STRAIGHTFORWARD
BUYING

OLDSMOBILE IS MAKING IT

EASIER TO BUY YOUR

SILHOUETTE BY PACKAGING

THE MOST POPULAR FEATURES

INTO TWO COMPREHENSIVE

SERIES. THERE'S NO NEED

TO WADE THROUGH ENDLESS

LISTS OF OPTIONS. AND TO

MAKE IT EASIER STILL,

OLDSMOBILE SALES

CONSULTANTS ARE

SPECIALLY TRAINED TO

ANSWER YOUR QUESTIONS

AND MAKE YOUR BUYING

EXPERIENCE ENJOYABLE.

Silhouette in Light Green Metallic.



Silhouette in Light Cream Metallic



STRAIGHTFORWARD
BUYING

OLDSMOBILE IS MAKING IT

EASIER TO BUY YOUR

SILHOUETTE BY PACKAGING

THE MOST POPULAR FEATURES

INTO TWO COMPREHENSIVE

SERIES. THERE'S NO NEED

TO WADE THROUGH ENDLESS

LISTS OF OPTIONS. AND TO

MAKE IT EASIER STILL,

OLDSMOBILE SALES

CONSULTANTS ARE

SPECIALLY TRAINED TO

ANSWER YOUR QUESTIONS

AND MAKE YOUR BUYING

EXPERIENCE ENJOYABLE.



Silhouette is Light Green Metallic.

A people carrier with an unexpected level of performance.



Silhouette gives you everything you want in a minivan — safety, contemporary styling, comfort and versatility. It also gives you

With 180 horsepower and plenty of torque, the potent and fuel-efficient 3400 SFI V6 out-powers most vehicles in its class.

low-maintenance engine designed with your busy lifestyle in mind. You don't have time for unnecessary maintenance and service problems, so the new 3400 SFI V6 engine features oil and coolant sensors that alert you to problems that might occur before they become critical.

In addition, the engine uses long-life coolant that lasts up to 100,000 miles or five years, and the transmission fluid is "filled for life."



Platinum-tipped spark plugs extend scheduled tune-up intervals to 100,000 miles.



STRAIGHTFORWARD BUYING

OLDSMOBILE IS MAKING IT

EASIER TO BUY YOUR

SILHOUETTE BY PACKAGING

THE MOST POPULAR FEATURES

INTO TWO COMPREHENSIVE

SERIES. THERE'S NO NEED

TO WADE THROUGH ENDLESS

LISTS OF OPTIONS. AND TO

MAKE IT EASIER STILL,

OLDSMOBILE SALES

CONSULTANTS ARE

SPECIALLY TRAINED TO

ANSWER YOUR QUESTIONS

AND MAKE YOUR BUYING

EXPERIENCE ENJOYABLE.

A conveniently spacious
interior as well as a luxuriously
comfortable one.



ECOLOGICALLY SOUND
GENERAL MOTORS IS
COMMITTED TO THE NATURE
CONSERVANCY® AND ITS
WORK OF PROTECTING
NATURAL HABITATS. GM
CONTRIBUTES GENEROUSLY
TO THE CONSERVANCY'S
EFFORTS AND DOES ITS
SHARE TO PROTECT THE
ENVIRONMENT BY USING
CFC-FREE REFRIGERANT,
LONG-LIFE ENGINE COOLANT
AND THE LATEST ON-BOARD
DIAGNOSTIC SYSTEM
(OBD-II) TO HELP REDUCE
ENGINE EMISSIONS.



An available rear climate control system lets the passengers adjust airflow.



Standard on Series II and available on Series I, Silhouette's power sliding side door is operable from the driver's seat, the rear seats and by remote control from up to 15 feet away.

Besides extra-roomy, 7-passenger seating, Silhouette is appointed with a number of amenities that add to

your driving comfort. For instance, all of the seats are individual buckets for the comfort of each occupant.

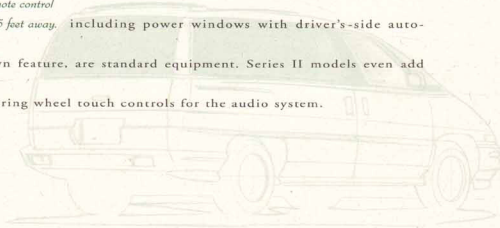


An overhead console includes a compass, map lights, an outside temperature display, plus storage compartments for small items.

To help keep everyone cool, Silhouette uses solar glass for the windshield and deep-tint glass behind the front doors. And for convenience, power accessories, including power windows with driver's-side auto-

down feature, are standard equipment. Series II models even add steering wheel touch controls for the audio system.

Other standard features that enhance Silhouette's comfort and convenience include a 6-way power driver's seat, air conditioning, TILT Wheel adjustable steering column, reading lamps, center console with locking storage area and dual cupholders, and deluxe wall-to-wall carpeting.



Silhouette Series II with seating areas trimmed in Medium Gray leather.



VERSATILITY
THE POWER SLIDING
SIDE DOOR IS A
CONVENIENCE FEATURE NOT
FOUND ON COMPETITIVE
MINIVANS. THE DOOR CAN BE
OPERATED BY SWITCHES
INSIDE THE CABIN,
OR BY THE STANDARD
REMOTE-CONTROL KEYLESS
ENTRY SYSTEM.
FOR SAFETY, THE DOOR
WILL NOT OPEN UNLESS THE
VEHICLE IS IN PARK.



ECOLOGICALLY SOUND
GENERAL MOTORS IS
COMMITTED TO THE NATURE
CONSERVANCY® AND ITS
WORK OF PROTECTING
NATURAL HABITATS. GM
CONTRIBUTES GENEROUSLY
TO THE CONSERVANCY'S
EFFORTS AND DOES ITS
SHARE TO PROTECT THE
ENVIRONMENT BY USING
CFC-FREE REFRIGERANT,
LONG-LIFE ENGINE COOLANT
AND THE LATEST ON-BOARD
DIAGNOSTIC SYSTEM
(OBD-II) TO HELP REDUCE
ENGINE EMISSIONS.



*Silhouette Series II with seating areas trimmed in Medium Gray leather.
Shown with available integrated child-safety seat (second row).*



VERSATILITY
THE POWER SLIDING
SIDE DOOR IS A
CONVENIENCE FEATURE NOT
FOUND ON COMPETITIVE
MINIVANS. THE DOOR CAN BE
OPERATED BY SWITCHES
INSIDE THE CABIN,
OR BY THE STANDARD
REMOTE-CONTROL KEYLESS
ENTRY SYSTEM.
FOR SAFETY, THE DOOR
WILL NOT OPEN UNLESS THE
VEHICLE IS IN PARK.



ECOLOGICALLY SOUND
GENERAL MOTORS IS
COMMITTED TO THE NATURE
CONSERVANCY® AND ITS
WORK OF PROTECTING
NATURAL HABITATS. GM
CONTRIBUTES GENEROUSLY
TO THE CONSERVANCY'S
EFFORTS AND DOES ITS
SHARE TO PROTECT THE
ENVIRONMENT BY USING
CFC-FREE REFRIGERANT,
LONG-LIFE ENGINE COOLANT
AND THE LATEST ON-BOARD
DIAGNOSTIC SYSTEM
(OBD-II) TO HELP REDUCE
ENGINE EMISSIONS.



Silhouette in Medium Blue Metallic.

Appreciated for its practicality and innovation.



The lightweight modular rear seats fold flat when not in use. The seat backs convert into convenient tray tables with built-in cupholders.

One of Silhouette's top priorities was the ability to handle a lot of cargo and provide plenty of space for its

occupants. Silhouette seats seven or, with all five rear modular seats removed, it provides over 112 cubic feet of unobstructed cargo area. You can quickly and easily reconfigure the balance of seating to cargo area, thanks to the lightweight modular seats that weigh only 34 pounds each — and you need no tools to remove them.

For added utility, Silhouette features a rooftop luggage carrier and an available remote power sliding side door (standard on Series II) that makes loading and unloading as easy as pushing a button.



A convenient and versatile air inflation kit is part of the touring suspension and the 3,000-pound towing package available on Silhouette.

Other features that enhance Silhouette's versatility include a convenience net and 12-volt auxiliary power outlet in the cargo area, a lower center console with locking storage area and dual cupholders, and an integrated roof antenna.



VERSATILITY
THE POWER SLIDING
SIDE DOOR IS A
CONVENIENCE FEATURE NOT
FOUND ON COMPETITIVE
MINIVANS. THE DOOR CAN BE
OPERATED BY SWITCHES
INSIDE THE CABIN,
OR BY THE STANDARD
REMOTE-CONTROL KEYLESS
ENTRY SYSTEM.
FOR SAFETY, THE DOOR
WILL NOT OPEN UNLESS THE
VEHICLE IS IN PARK.

Advanced safety features for
your peace of mind.



SAFETY

IN SILHOUETTE, YOU AND
YOUR FAMILY WILL FEEL
REASSURED BY FEATURES
THAT GO BEYOND OCCUPANT
PROTECTION. EVERY
SILHOUETTE IS EQUIPPED
WITH STANDARD AUTOMATIC
PROGRAMMABLE POWER
DOOR LOCKS AND AN
ILLUMINATED ENTRY SYSTEM
TO HELP ENSURE YOUR
PERSONAL SECURITY.



*A driver air bag is a
standard feature on every*

Silhouette is designed with a variety of safety systems.
Some of these help the driver avoid a collision. That's
why Silhouette is equipped with a responsive engine to

quickly get you out of a dangerous situation, front-
Silhouette minivan. wheel drive for stability and traction,
and anti-lock brakes for optimum control under
maximum braking. Other safety systems are designed
to help minimize occupant injuries should a collision



*The standard remote-control
keyless entry system
adds to your security.*

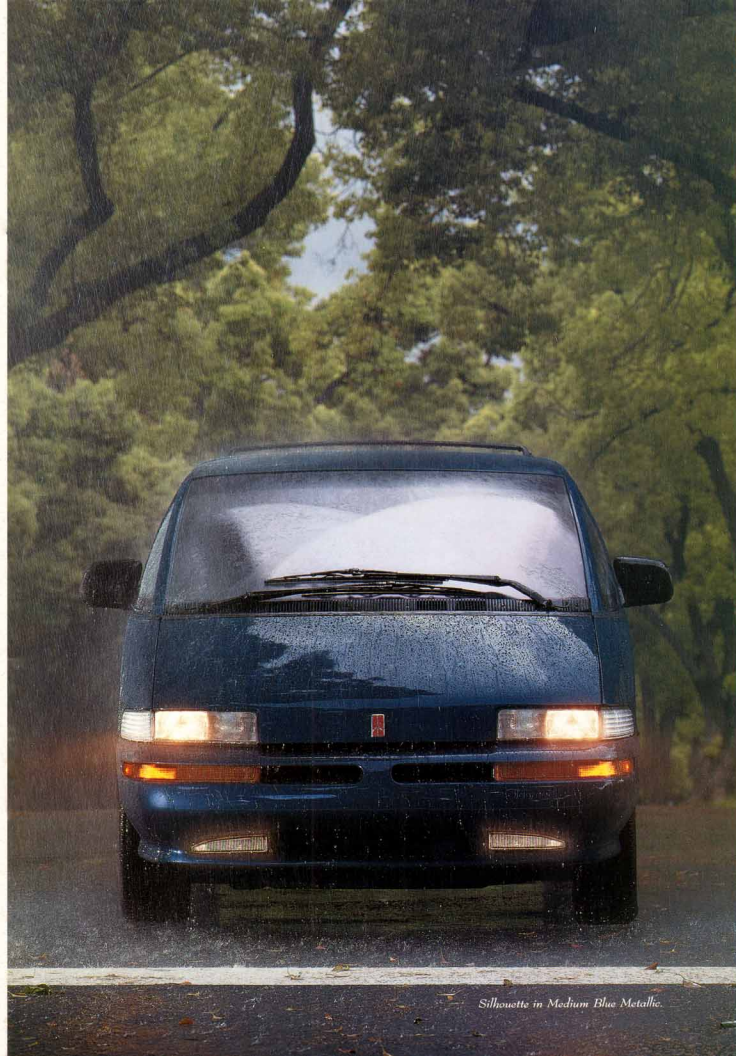


*Available integrated single or dual child-
safety seats help protect small children.*

occur. In Silhouette, these include a standard driver
air bag; sturdy safety-cage
construction, and front and rear crush zones
that help absorb and guide impact energy
away from the passenger cabin.

Other safety and security features include a brake/transmission shift
interlock, 3-point front and rear outboard safety belts plus center position lap belt,
halogen headlamps, foglamps, side and rear window defoggers, child-security
sliding door lock, and deep-tint privacy glass.

Always wear your safety belt, even with an air bag.



Silhouette in Medium Blue Metallic.



OWNER AFTERCARE
IN ADDITION TO OUR
3-YEAR/36,000-MILE
(WHICHEVER COMES FIRST)
BUMPER-TO-BUMPER LIMITED
WARRANTY, WE ALSO OFFER
COURTESY TRANSPORTATION,
FREE TRIP ROUTING AND
24-HOUR ROADSIDE
ASSISTANCE BY CALLING
1-800-442-0185.
AT OLDSMOBILE, WE'RE
COMMITTED TO YOUR
SATISFACTION LONG AFTER
THE PURCHASE OF
YOUR VEHICLE.



SAFETY

IN SILHOUETTE, YOU AND YOUR FAMILY WILL FEEL REASSURED BY FEATURES THAT GO BEYOND OCCUPANT PROTECTION. EVERY SILHOUETTE IS EQUIPPED WITH STANDARD AUTOMATIC PROGRAMMABLE POWER DOOR LOCKS AND AN ILLUMINATED ENTRY SYSTEM TO HELP ENSURE YOUR PERSONAL SECURITY.



Silhouette in Beige Metallic.



OWNER AFTERCARE

IN ADDITION TO OUR 3-YEAR/36,000-MILE (WHICHEVER COMES FIRST) BUMPER-TO-BUMPER LIMITED WARRANTY, WE ALSO OFFER COURTESY TRANSPORTATION, FREE TRIP ROUTING AND 24-HOUR ROADSIDE ASSISTANCE BY CALLING 1-800-442-OLDS. AT OLDSMOBILE, WE'RE COMMITTED TO YOUR SATISFACTION LONG AFTER THE PURCHASE OF YOUR VEHICLE.



SAFETY

IN SILHOUETTE, YOU AND

YOUR FAMILY WILL FEEL

REASSURED BY FEATURES

THAT GO BEYOND OCCUPANT

PROTECTION. EVERY

SILHOUETTE IS EQUIPPED

WITH STANDARD AUTOMATIC

PROGRAMMABLE POWER

DOOR LOCKS AND AN

ILLUMINATED ENTRY SYSTEM

TO HELP ENSURE YOUR

PERSONAL SECURITY

SAFETY AND SECURITY

Table with 2 columns: SERIES and features like Anti-lock power front disc/rear drum brakes, Brake/transmission shift interlock, Driver air bag, 3-point front and rear outboard safety belts, etc.

MECHANICAL

Table with 2 columns: SERIES and features like 3400 V6 engine with sequential port fuel injection, 4-speed electronic-shift automatic transmission, Front-wheel drive, etc.

EXTERIOR

Table with 2 columns: SERIES and features like 16-inch aluminum wheels, P185 70R15 black sidewall all-season radial tires, P205 70R15 black sidewall touring radial tires, etc.

EXTERIOR COLORS

Table with 2 columns: SERIES and color names like Light Gray Metallic (14), Bright White (16), Medium Blue Metallic (30), etc.

*Leather-trimmed seating areas standard and available on Series II models only. **Available in cloth trim only.



Light Gray Metallic



Bright White



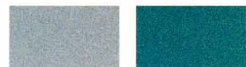
Medium Blue Metallic



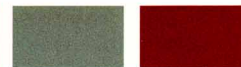
Beige Metallic



Dark Teal Metallic



Light Blue Metallic



Bright Aqua Metallic



Light Green Metallic



Red Metallic

The paint color samples shown above may vary slightly from actual vehicle color due to the printing process.

Silhouette Equipment

COMFORT AND CONVENIENCE

Table with 2 columns: SERIES and features like Air conditioning with CFC-free refrigerant, Auxiliary rear air conditioning and heating system, Power windows with driver's auto-down, etc.

AUDIO SYSTEMS

Table with 2 columns: SERIES and features like Delco ETR AM/FM stereo with cassette player, rock/cass, digital clock, 4 speakers and integrated roof antenna, etc.

SEATING AND TRIM

Table with 2 columns: SERIES and features like Reclining front bucket seats with folding armrests, 6-way power driver's seat, Upholstered modular seats with tabletop surfaces and dual cupholders, etc.

Color Combinations

INTERIOR LEATHER* AND CLOTH COLORS

Table with 4 columns: BLUE**, MEDIUM GRAY, DARK RED, BEIGE and 2 rows of color options.

Silhouette Specifications

EXTERIOR DIMENSIONS

Table with 2 columns: Feature and dimension like Wheelbase (in) 109.8, Length (in) 194.7, Width (in) 73.9, etc.

INTERIOR DIMENSIONS

Table with 2 columns: Feature and dimension like Headroom, front/2nd row/3rd row (in) 39.2/39.0/37.8, Legroom, front/2nd row (in) 40.0/36.1/36.8, etc.

CAPACITIES

Table with 2 columns: Feature and capacity like Seating capacity (passenger) 7, Maximum cargo volume (cu ft) 112.6, etc.

EPA ESTIMATED FUEL ECONOMY

Table with 2 columns: Feature and fuel economy like 3400 SFI V6 (mpg, city/hwy) 18/25

POWER TEAM

Table with 2 columns: Feature and power team details like ENGINE 3400 SFI V6, Displacement 3.4 liters (205 cu in), etc.



OWNER AFTERCARE

IN ADDITION TO OUR

3-YEAR/36,000-MILE

(WHICHEVER COMES FIRST)

BUMPER-TO-BUMPER LIMITED

WARRANTY. WE ALSO OFFER

COURTESY TRANSPORTATION,

FREE TRIP ROUTING AND

24-HOUR ROADSIDE

ASSISTANCE BY CALLING

1-800-442-OLDS.

AT OLDSMOBILE, WE'RE

COMMITTED TO YOUR

SATISFACTION LONG AFTER

THE PURCHASE OF

YOUR VEHICLE.

A Word about Oldsmobile

THE GM CARD

Every time you use the no-annual-fee GM MasterCard®, GM will credit 5% of your purchase toward buying or leasing a new Oldsmobile. It could mean saving hundreds, even thousands, of dollars. Call 1-800-SCM-CARD for more information, including annual limits and restrictions.

ACCELERATED EARNINGS NETWORK

Visit participating GM retailers for up to 10% in GM Card earnings on eligible parts and service transactions. Call 1-800-947-1000 for more information.

SMARTLEASE BY GMAC

SmartLease lets qualified customers pay for the portion of the vehicle they use, rather than paying for the entire vehicle as you would with traditional financing. You'll also enjoy lower up-front costs and lower monthly payments. Plus, you'll be able to drive a new vehicle more often or drive a higher-priced model. Ask your Oldsmobile retailer for more information.

FOR OCCUPANT PROTECTION

- Driver Supplemental Inflatable Restraint • Manual lap/shoulder safety belts, driver and right front passenger • Manual lap/shoulder safety belts, outboard rear-seat positions • Manual lap safety belt, second-row center seat position • Safety belt use reminder system • Energy-absorbing steering column • Energy-absorbing instrument panel • Laminated windshield glass, urethane bonded • Tempered safety glass, side and rear windows • Interlocking door latches • Side door beams • Passenger-guard inside door lock handles • Safety armrests • Flood restraints, adjustable, driver and right front passenger • Dual sun visors • Buckle-up/inside rearview mirror • Security door locks and door retention components • Sliding door child-security lock • Automatic door locking system • Front and rear crush zones • Pressure lock radiator cap • Pressure relief fuel cap

FOR CRASH AVOIDANCE

- Side marker lamps and reflectors • Parking lamps • 4-way hazard warning flashers • Buck-up lamps • Center high-mounted stoplamp • Directional signal control • Windshield defogger/washer and multi-speed wipers • Inside daylight/rearview mirror • Outside rearview mirrors • Brake system with dual master cylinder plus warning light • Anti-lock brakes • Starter safety switch • Dual-action hood latch (front opening) • Low-glass finish (inside windshield moldings, wiper arms and blades) • Safety roof wheel rims • Tires with built-in tread wear indicators • Illuminated lantern and defogger controls • Brake/transmission shift interlock • Audible disc brake lining wear indicators • Electric rear window defogger • Door warning lights/reflectors

FOR THEFT DETERRENCE

- Theft-deterrent steering column lock • Theft-deterrent key locking system • Ignition key removal audible reminder • Remote inside hood release • Visible vehicle identification number • Laser-etched VIN plate

The 1996
OLDSMOBILES



Aurora



Cirra Sedan



Ninety Eight



Cirra Wagon



LSS



Achieva Sedan



Eighty Eight



Achieva Coupe



Cutlass Supreme Sedan



Silhouette



Cutlass Supreme Coupe



Bravada



© 1995 GM



Official Sponsor of the
1996 U.S. Olympic Team